

Q2 Product Update

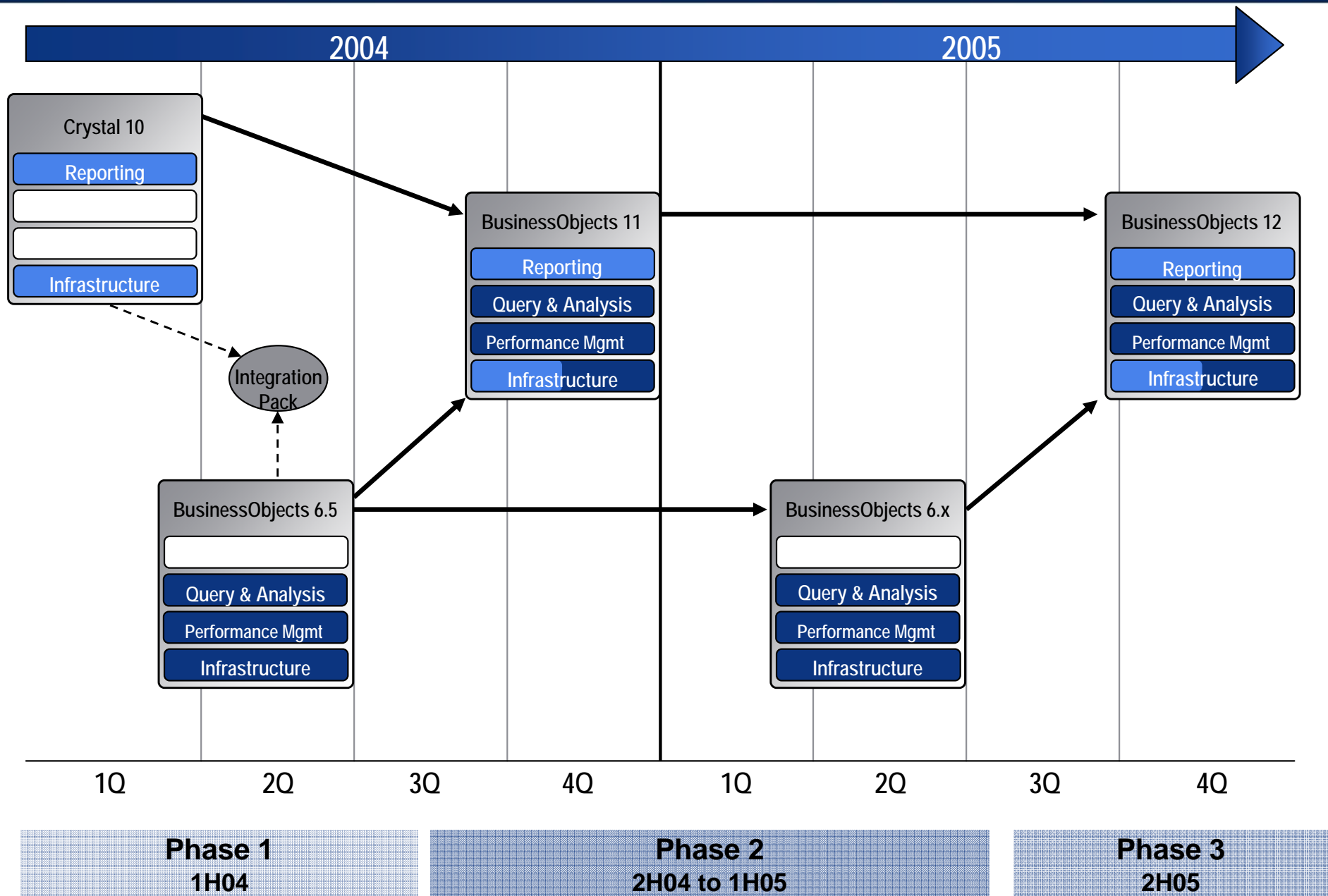
Bob Coen
Pittsburgh
25 June, 2004



Today's Product Updates

- ▶ **Integration Roadmap recap**
- ▶ **BusinessObjects 6.5 product suite**
 - WebIntelligence and BusinessObjects full client
 - Application Foundation
 - Data Integrator
- ▶ **BusinessObjects Crystal Integration Pack (BCIP)**

High-Level Product Integration Roadmap

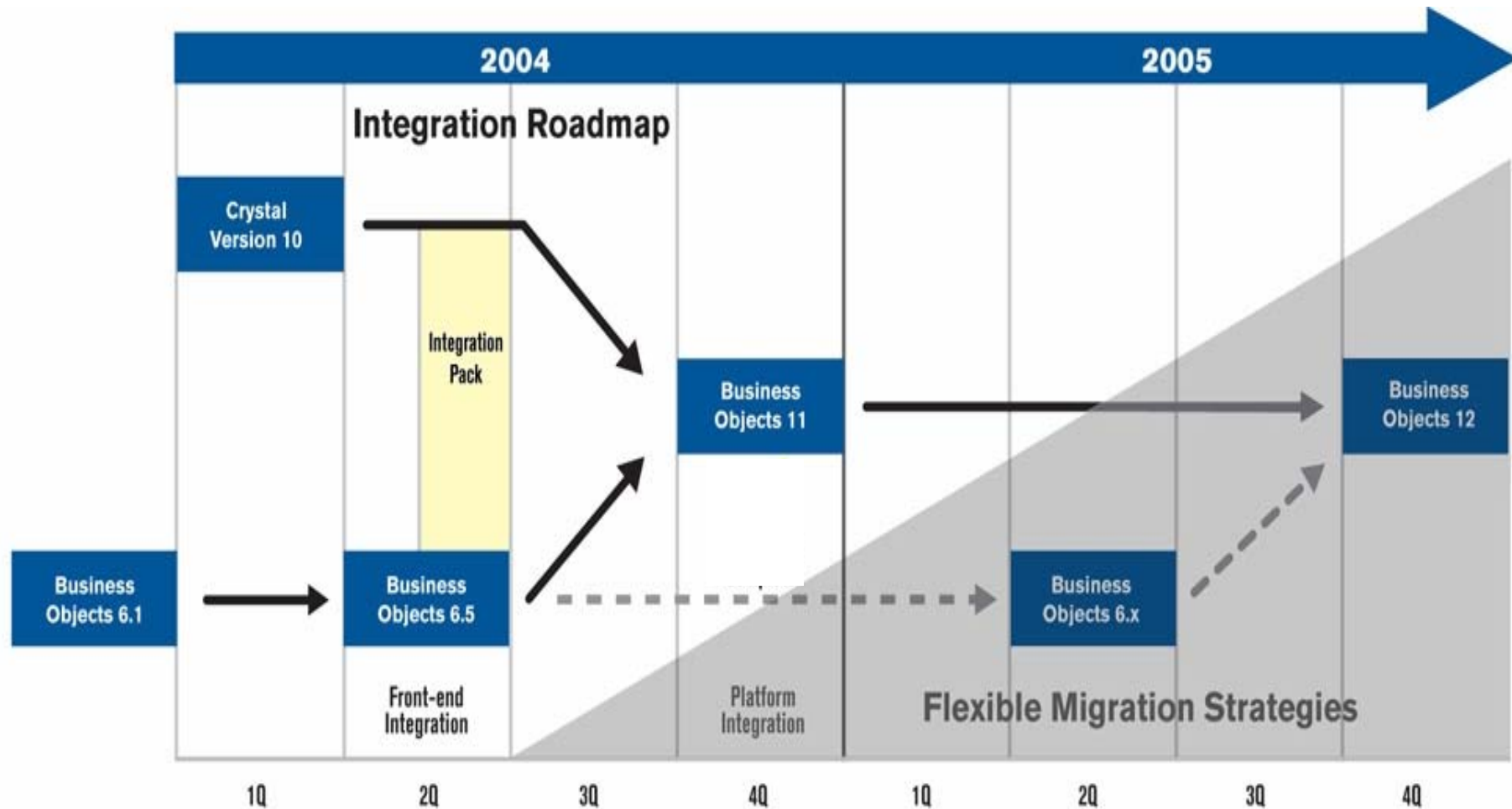


BusinessObjects Full Client Update

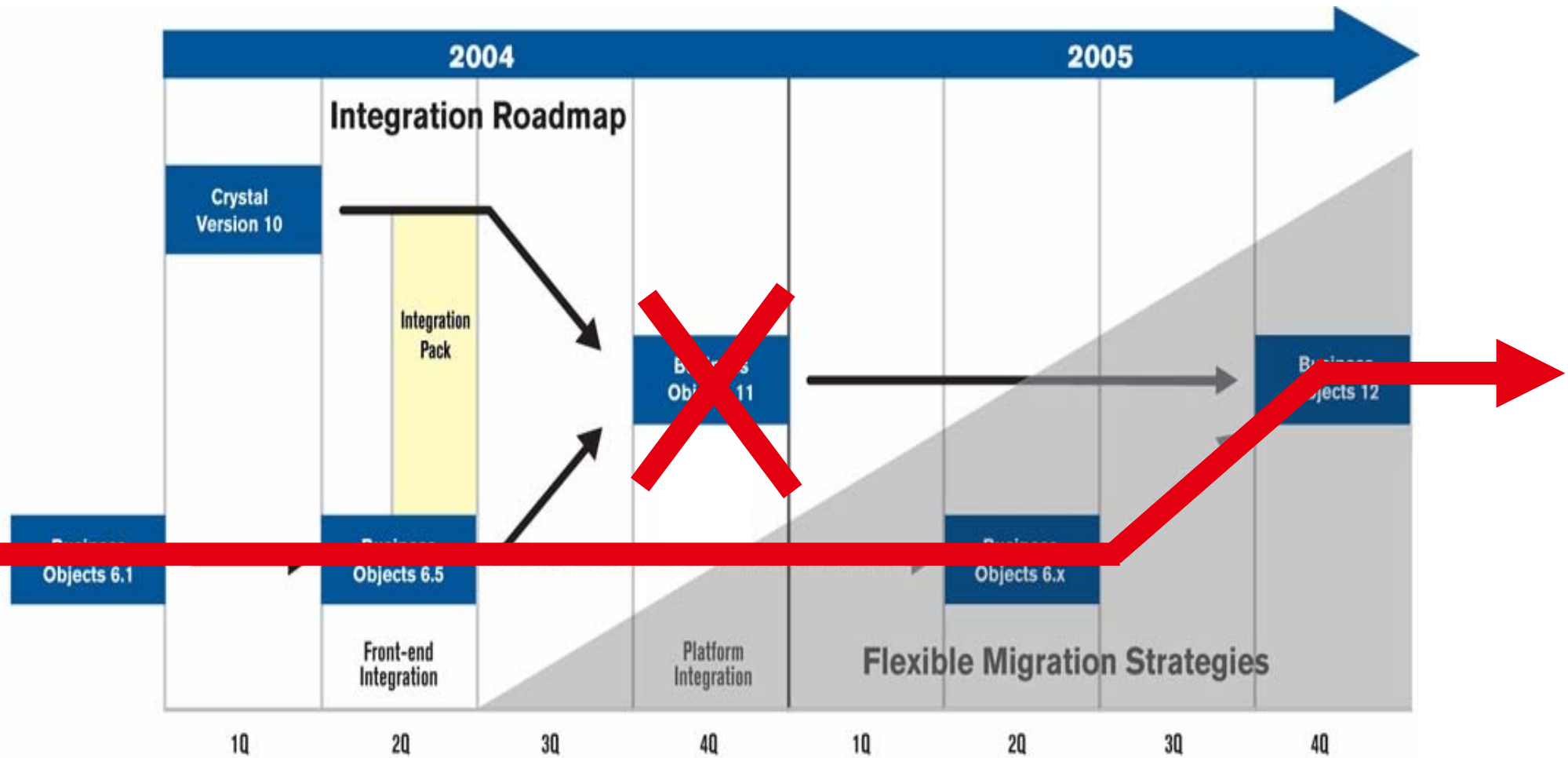
May, 2004



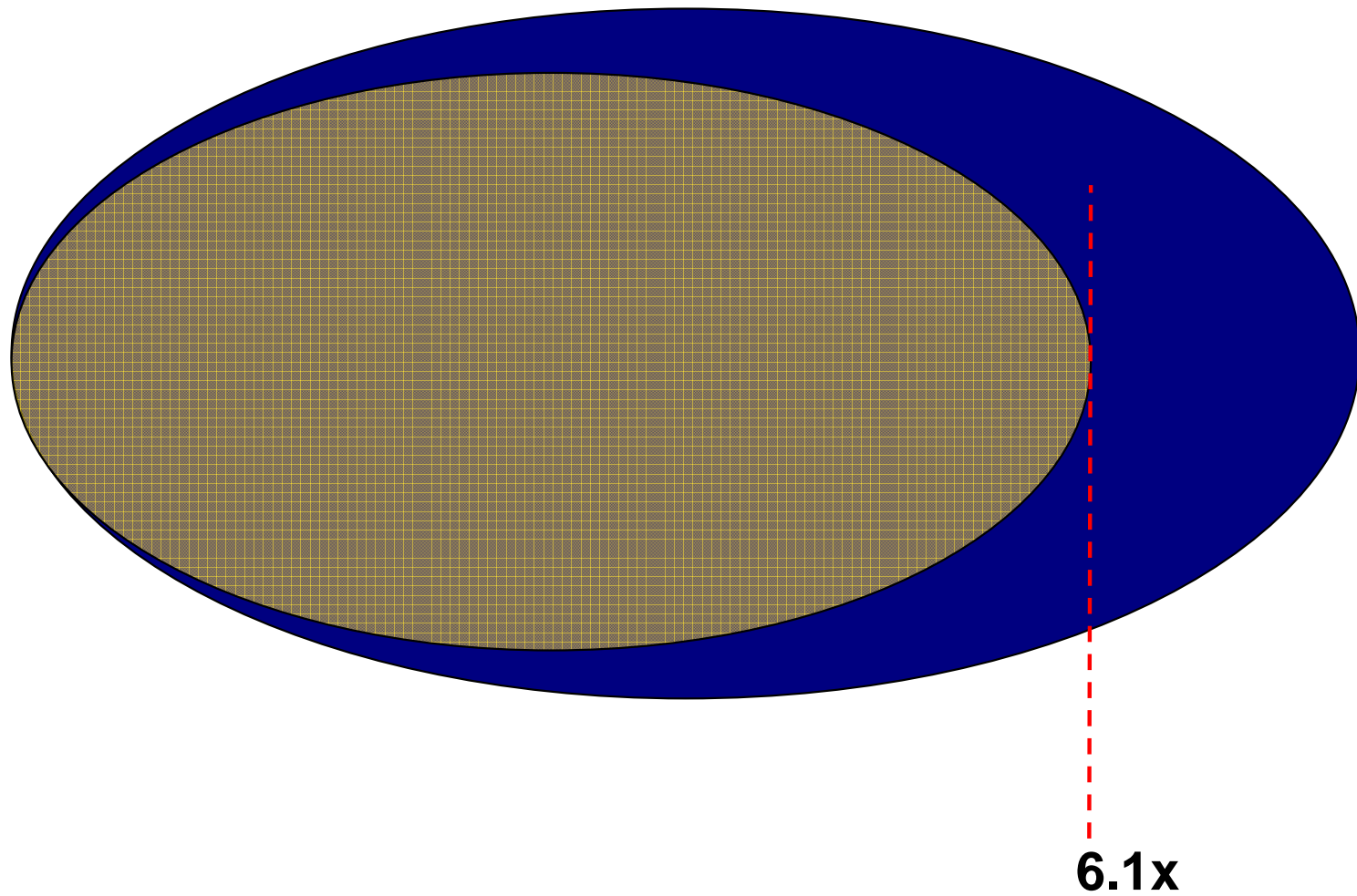
Full Client roadmap



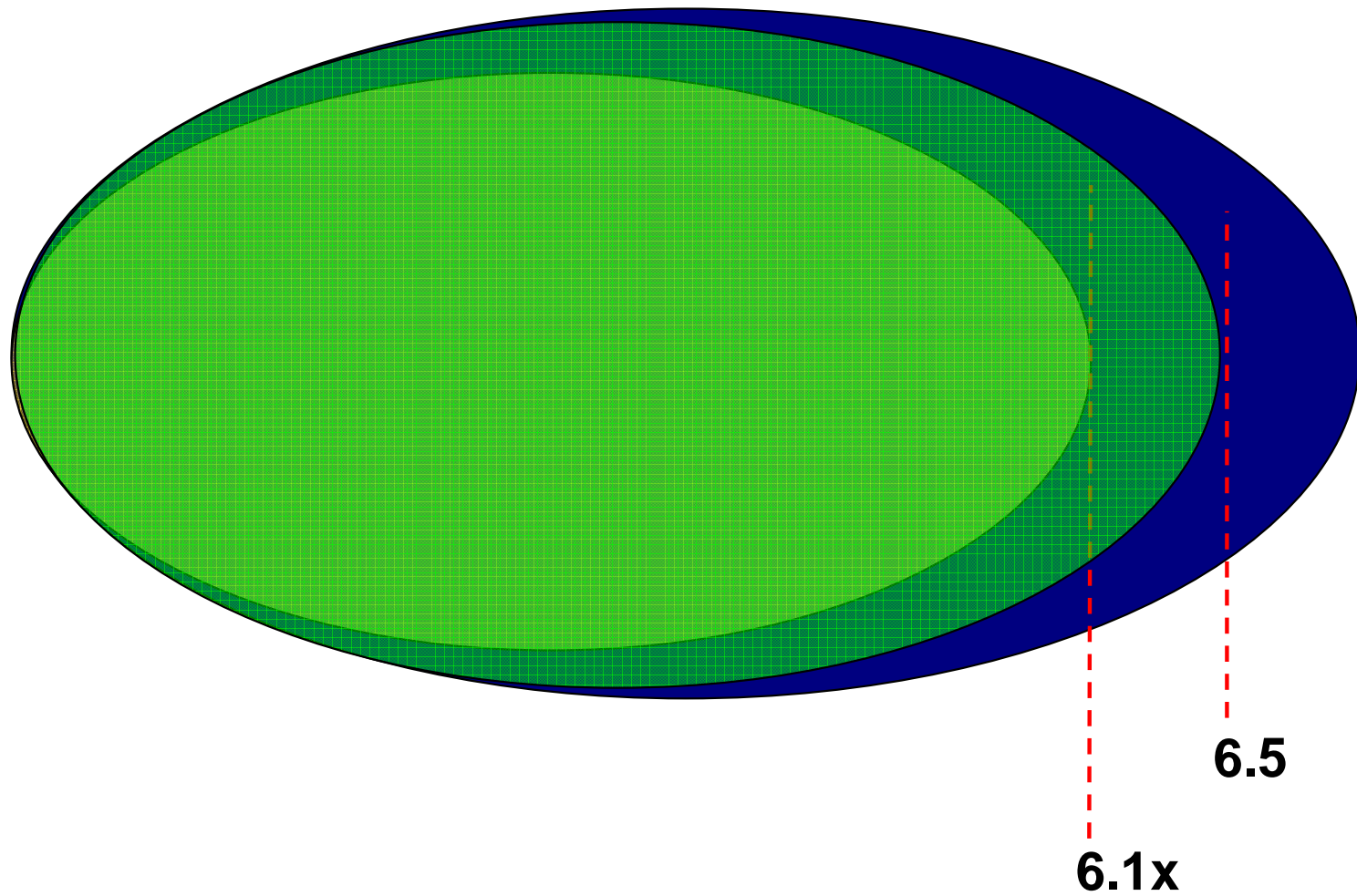
Full Client roadmap



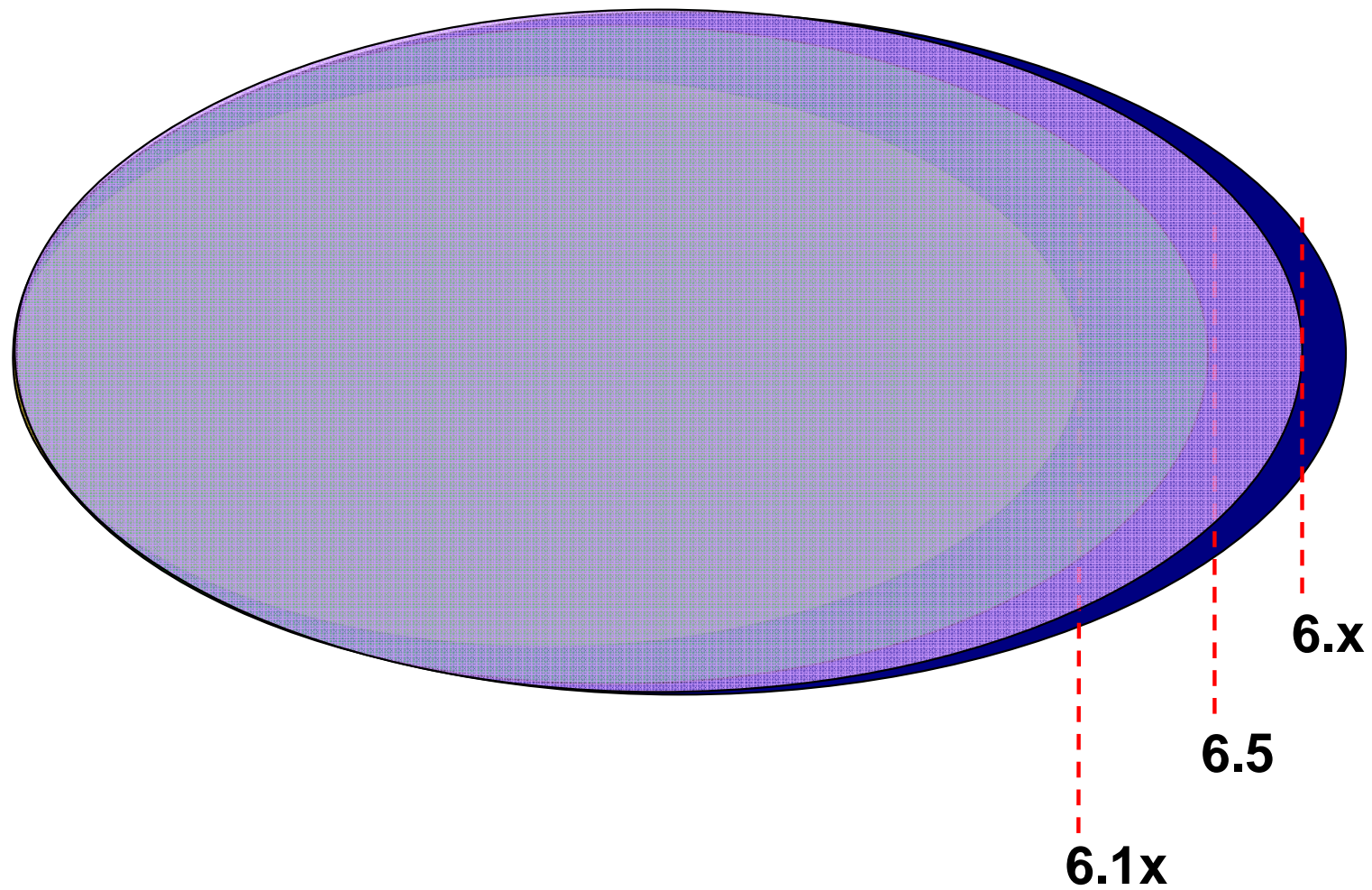
WebIntelligence parity with Full Client



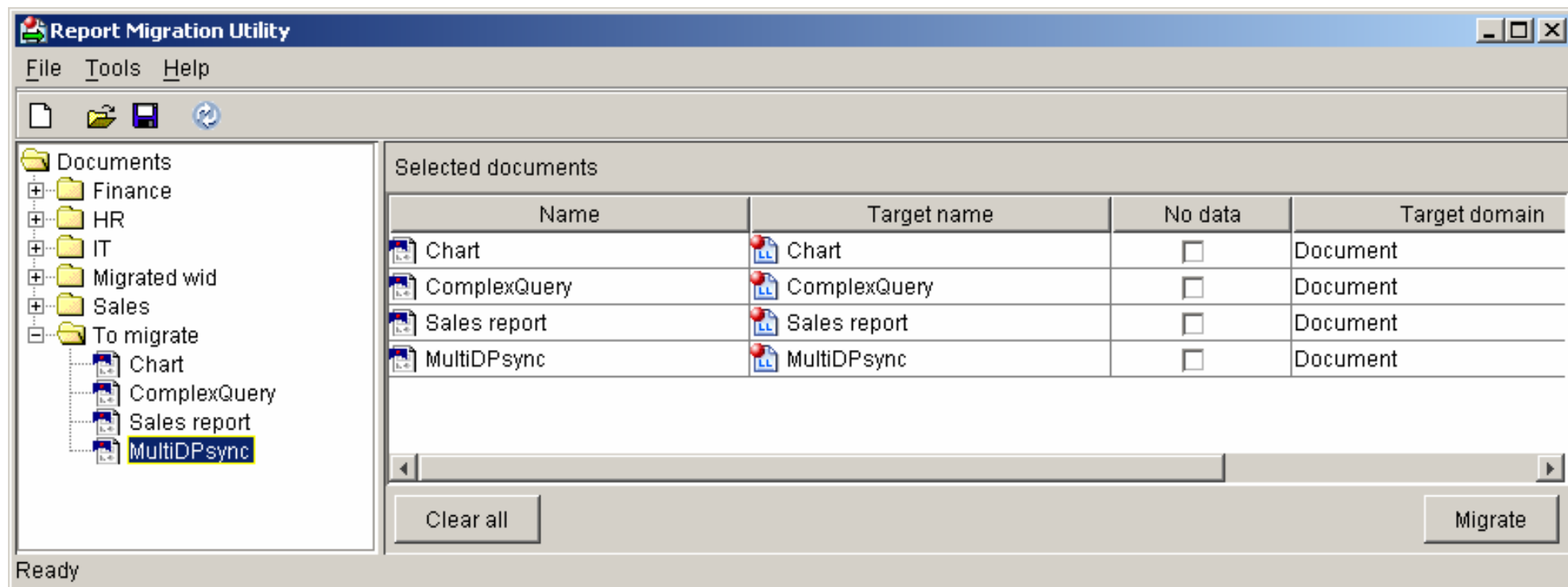
WebIntelligence parity with Full Client



WebIntelligence parity with Full Client



Full Client migration to WebIntelligence



Key points

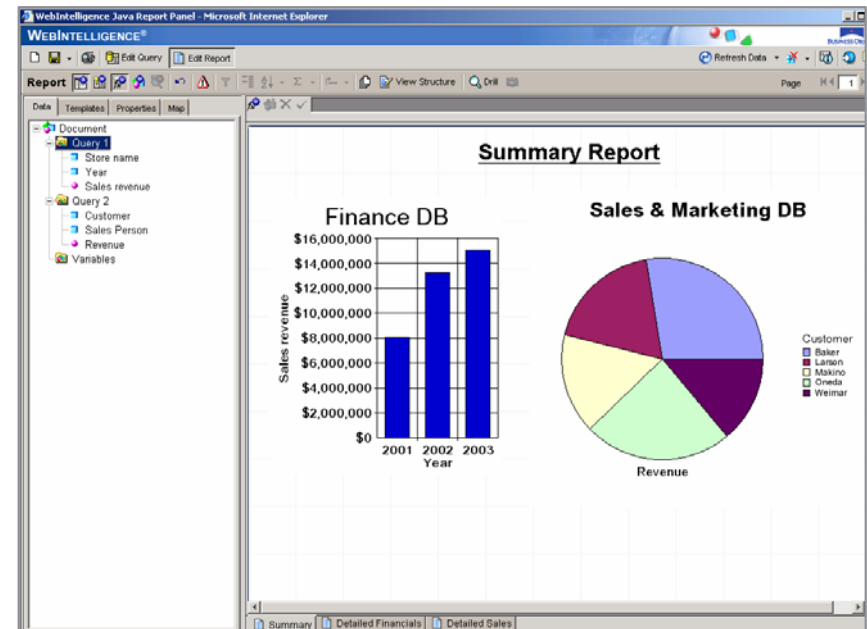
- ▶ **Customer investments in BusinessObjects Full Client are safe**
 - Continue in the product roadmap
 - But not in BusinessObjects 11
 - No planned end of life
 - R&D focusing on WebIntelligence

Today's Product Updates

- ▶ **Integration Roadmap recap**
- ▶ **BusinessObjects 6.5 product suite**
 - WebIntelligence and BusinessObjects full client
 - Application Foundation
 - Data Integrator
- ▶ **BusinessObjects Crystal Integration Pack (BCIP)**

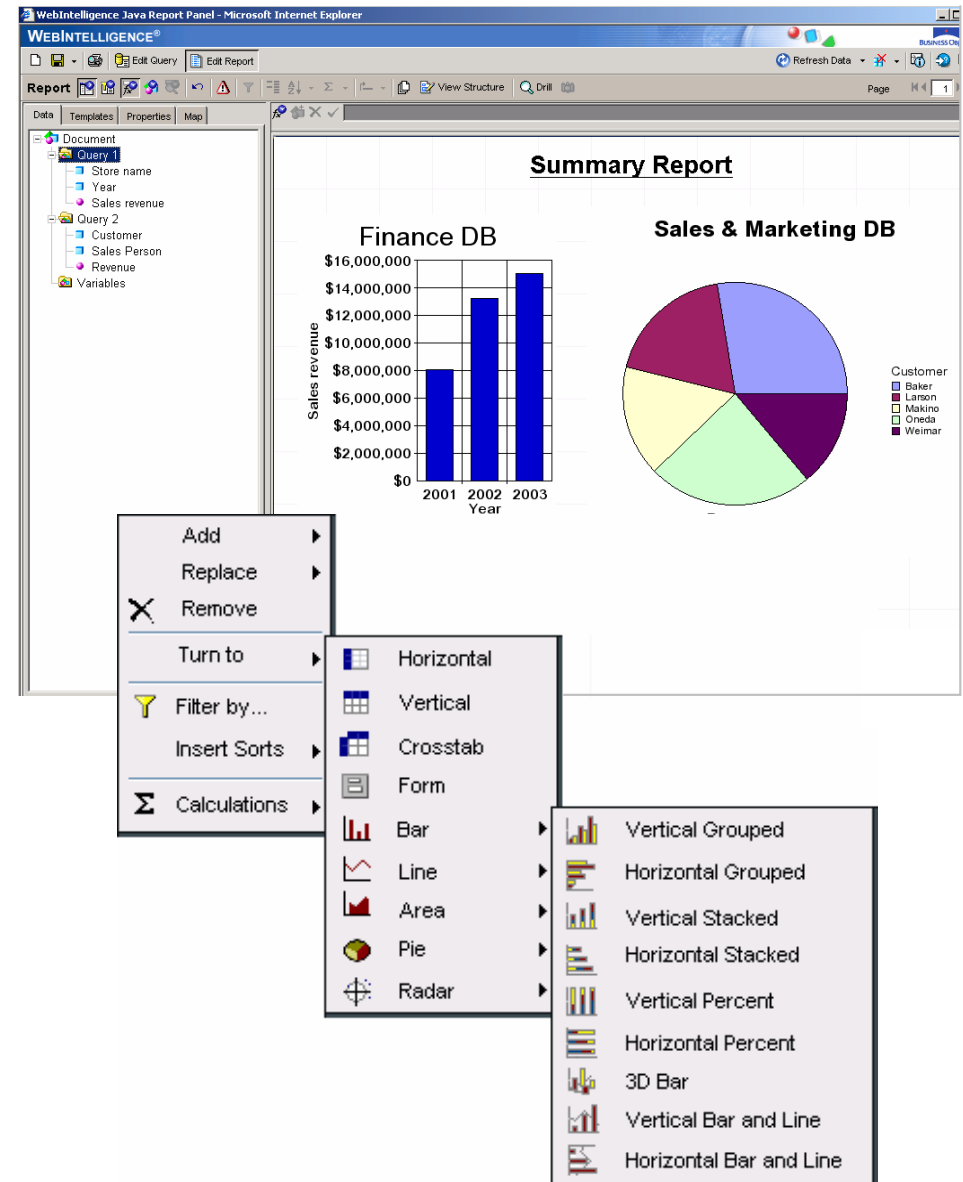
BusinessObjects 6.5 Product Suite: Overview

- ▶ **BusinessObjects 6.5 BI improvements**
 - More powerful
 - Improved performance
 - Easier to deploy and administer
- ▶ **Already in beta**



WebIntelligence 6.5: Power

- ▶ **Multiple data sources**
 - Unsynchronized
- ▶ **Alerters**
 - Exception highlighting
- ▶ **Expanded on-report analysis**
 - Now via right-mouse click
- ▶ **Horizontal bar charts**
 - For BusinessObjects full client
- ▶ **Report conversion utility**
 - Phase 1 utility that converts full client and WebIntelligence 2.7 reports to WebIntelligence 6.5



▶ **Optimized server processing**

- Category navigation and report selection
- Report viewing also faster
- Faster Save as Excel
- Dashboard Manager performance gains

▶ **Document caching**

- Better viewing performance in InfoView
 - For HTML (both draft and page by page), PDF and Excel
 - Corporate documents only
- Two caching methods
 - Pre-load cache with BCA
 - Real-time caching driven by user interactions (1st user pays)

Semantic layer

- ▶ **Index awareness for better performance**
- ▶ **Derived tables**
 - Allows the result set of a SQL query to be treated like a table in Designer
 - Simplifies schema and universe management
 - Performance gain (example: ranking on the DB)
- ▶ **Leveraging ANSI 92 SQL**
 - Full outer join
 - Conditions in WHERE and FROM clauses
- ▶ **Stored macros for Teradata**

BusinessObjects 6.5: Deployment

▶ Security

- Web Supervisor for thin-client user management
- LDAP enhancements – single sign-on integration and synchronization
- Increased encryption level

▶ Global deployments

- Unicode access and display (WebIntelligence and InfoView)
- Multilingual Server Phase 2 - Adds Japanese and double byte
- Support for more languages incl. Chinese (simplified and traditional)

▶ Other

- Administration SDK
- Multiple instances on a single UNIX box
- Sun Java Virtual Machine (more info on Online Customer Support)

Broadcast Agent and InfoView

► Broadcast Agent

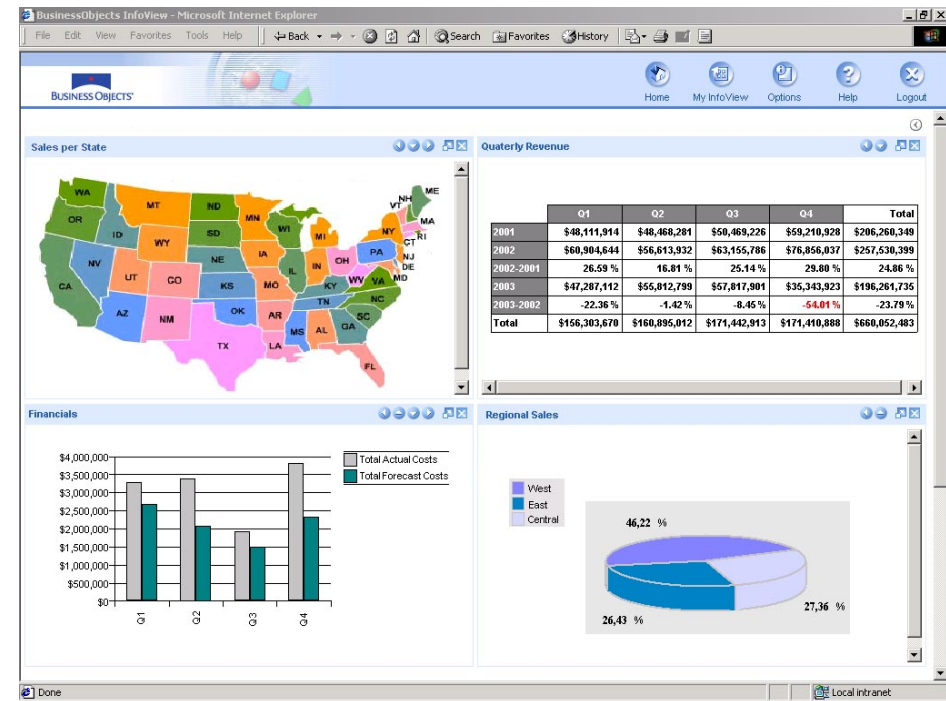
- Scheduling of WebIntelligence OLAP documents

► Broadcast Agent Publisher

- Web publishing of PDF and Excel documents

► InfoView

- Improved category management
- Section 508 support



WebIntelligence 6.5 Demonstration?

